

# LED Street Lights

Features & Benefits	
LED Street Light – SP90	LED Street Light – LU1
<ul style="list-style-type: none"> <li>■ Power Consumption: <b>28W</b></li> <li>■ High Brightness: <b>2,100lm</b></li> <li>■ 50,000 Hours life</li> <li>■ Save 75% energy</li> <li>■ CE, RoHS, UL approved</li> <li>■ 85-264VAC or 12-24VDC</li> <li>■ E40</li> <li>■ 1 Year Warranty</li> </ul>	<ul style="list-style-type: none"> <li>■ Power Consumption: <b>28W</b></li> <li>■ High Brightness: <b>2,100lm</b></li> <li>■ 50,000 Hours life</li> <li>■ Save 75% energy</li> <li>■ CE, RoHS, UL approved</li> <li>■ 85-264VAC or 12-24VDC</li> <li>■ Hoop</li> <li>■ 3 Years Warranty</li> </ul>
 <p>A photograph of the SP90 LED street light. It features a rectangular array of 18 LED chips on a clear lens, mounted on a white, E40-style base with a ribbed heat sink.</p>	 <p>A photograph of the LU1 LED street light. It has a sleek, white, teardrop-shaped design with a square LED panel on its side and a small lens at the tip.</p>
Installation and Lighting Effects Pictures	
 <p>A photograph showing the SP90 LED street light installed on a metal pole. The light is angled downwards. A timestamp '2008/08/13 05:07' is visible in the bottom right corner.</p>	 <p>A photograph showing the LU1 LED street light installed on a tall pole in an urban setting. The light is angled downwards. A building is visible in the background.</p>

## Features & Benefits

### LU2 – LED Street Light

- Power Consumption: **56W**
- High Brightness: **4,200lm**
- 50,000 Hours life
- Save 75% energy
- CE, RoHS, UL approved
- 85-264VAC or 12-24VDC
- Hoop
- 3 Years Warranty



### LU4 – LED Street Light

- Power Consumption: **112 W**
- High Brightness: **8,400lm**
- 50,000 Hours life
- Save 75% energy
- CE, RoHS, UL approved
- 85-264VAC or 12-24VDC
- Hoop
- 3 Years Warranty



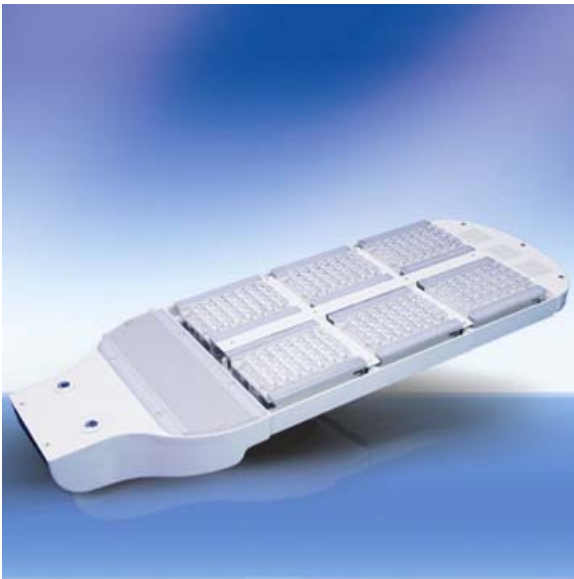
## Installation and Lighting Effects Pictures



## Features & Benefits

### LU6 – LED Street Light

- Power Consumption: **168W**
- High Brightness: **12,600lm**
- 50,000 Hours life
- Save 75% energy
- CE, RoHS, UL approved
- 85-264VAC or 12-24VDC
- Hoop
- 3 Years Warranty

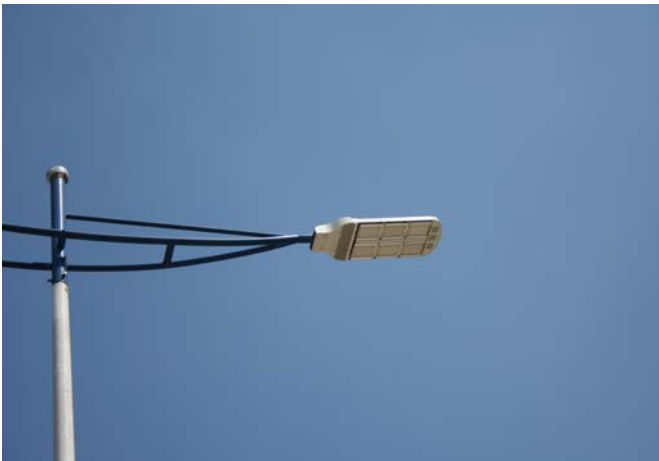


### LED Street Light – LU8

- Power Consumption: **224W**
- High Brightness: **16,800lm**
- 50,000 Hours life
- Save 75% energy
- CE, RoHS, UL approved
- 85-264VAC or 12-24VDC
- Hoop
- 3 Years Warranty



## Installation and Lighting Effects Pictures



## Features & Benefits

### SD2 – High Power LED Tunnel Light

- Power Consumption: **56 W**
- High Brightness: **4,200lm**
- 50,000 Hours life
- Save 75% energy
- CE, RoHS, UL approved
- 85-264VAC or 12-24VDC
- Hoop
- 1 Year Warranty



## Installation and Lighting Effects Pictures



**Shenzhen Bang-Bell Electronics Co., Ltd.**

Add: 5/F, Building 4, Tianfu'an Industrial Park, Lezhujiao, Jiu wei, Xixiang, Bao'an, Shenzhen, Guangdong, China.

Tel.: +86 755 3367 6001 Fax: +86 755 3367 6038 Mobile: +86 138 2317 7749

E-mail: [jasonyang@bbeled.com](mailto:jasonyang@bbeled.com) Website: [www.bbeled.com](http://www.bbeled.com) MSN: [jasonyang1977@hotmail.com](mailto:jasonyang1977@hotmail.com)