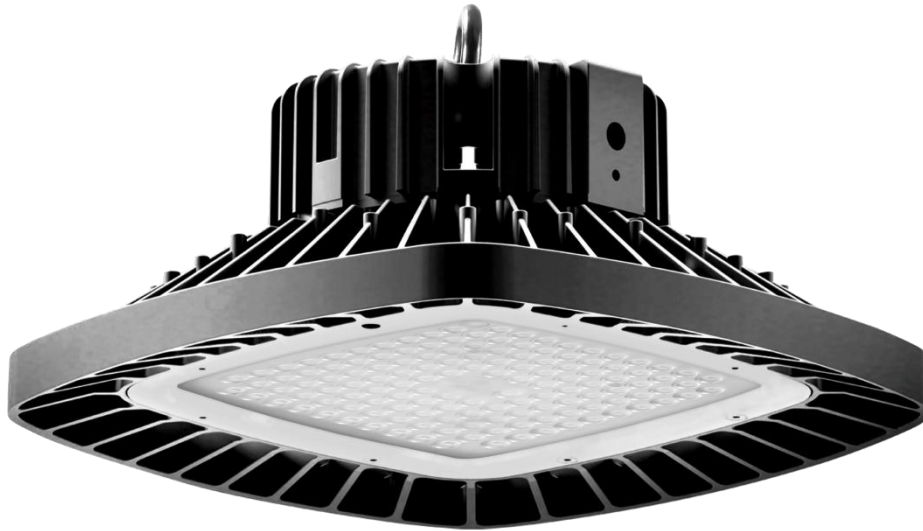




V4: HBS-27/03/17

**BBE<sup>®</sup> LED High Bay Square**

**HBS<sup>™</sup> series**



**Performance Data:**

- |   |  |
|---|--|
| <ul style="list-style-type: none"><li>• Input Voltage: 100-277Vac 50/60Hz</li><li>• Power: 100-150W</li><li>• Luminous flux: 11000-16500lm</li><li>• Up to 130LPW</li><li>• Color Temperature: 4000K / 5000K / 5700K(+/-300K)</li></ul> | <ul style="list-style-type: none"><li>• CRI: &gt;70</li><li>• PF&gt;0.95, THD&lt;15%</li><li>• Calculated L70&gt;50,000h @ Ta 25°C (77°F)</li><li>• Work Temp.: -40~45°C (-40~113°F)</li><li>• Warranty: 5 years limited</li></ul> |
|---|--|

## Features and Specifications

### Application

BBE LED High Bay light HBS series was designed specially to replace conventional light in a wide variety of industrial and warehouse applications.

### Benefits

- Superior light quality
- Point-to-point replacement to the 250-400W traditional High-bay luminaire
- Great energy saving up to 70%
- Significant reduction in maintenance

### Construction

Robust die-cast aluminum luminaire body painted in epoxy powder coating in black.

Air-flow heat sink allows for fast air movement as the perfect cooling system to ensure the performance and longevity.

The luminaire assembly meets dust and moisture rating of IP65 per IEC60529 and impact protection of IK08 per EN62262, ensure long life and protection from the environment.

Rod mounting, hook with chain mounting and heavy duty steel yoke mounting are available.

### LED & Optics

Highly efficient LM80 approved NICHIA LED is applied for maximum efficiency and long life (calculated L70 > 50,000h @ Ta=40°C).

Color temperature in natural white 4000K, pure white 5000K and cool white 5700K with CRI 70+ are available, CRI>80 is optional. LPW up to 120 is available.

Optics lens in 60, 90 & flat tempered glass in 120 degree options with over 90% efficiency reduces light loss significantly.

### Electronics

MEANWELL driver in 100-277Vac, 50/60Hz, power factor > 95% and THD <15%, IP65 waterproofed. Class I output.

PWM or 0-10V dimming is available for options.

Over current, short circuit, over voltage and over temperature protections are integrated.

### Listing

UL/CUL, SAA, CE, CB approved, RoHS compliant.

### Warranty

5 years limited.

## Ordering information:

Example: HBS100-EPWMN3-HM



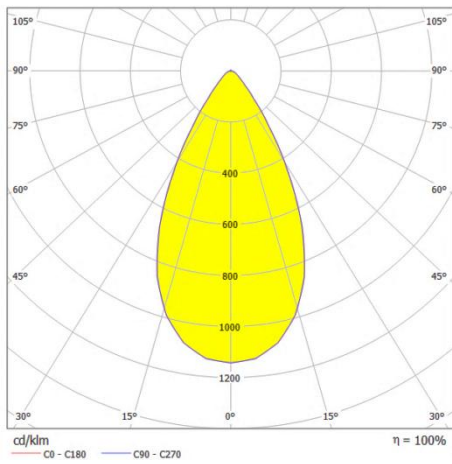
Series	Power	-	Voltage	CCT	Optics	LED Bin	-	Options
HBS	100	-	E	PW	M	N3	-	HM
HBS	100 120 135 150	-	E: 100-277Vac	NW: 4000K PW: 5000K CW: 5700K	M: 60degree W: 90degree G: 120degree	N3: Nichia 3030		HM: Hook w/chain mounting RM: Rod mounting YM: Yoke mounting VD: 0-10V dimming PD: PWM dimming

\*Consult your sales representative for the options and the lead time will be varied depending on the options selected.

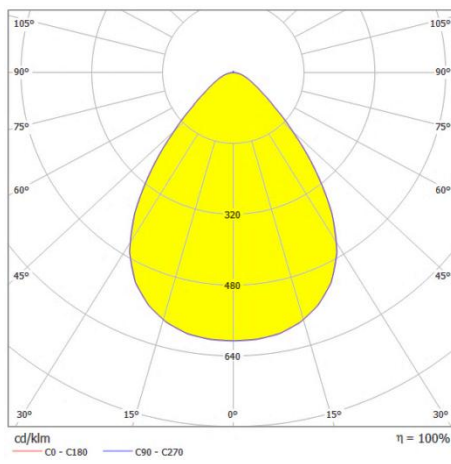
**Electrical Data:**

	Number of LEDs (pcs)	LED drive current (mA)	Rated Power (W)
HBS100	90	160	100
HBS120	135	125	120
HBS135	135	143	135
HBS150	135	163	150

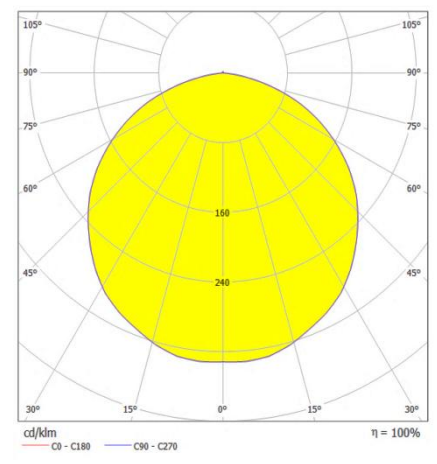
**Optical & Photometric Data**



M: 60 degree



W: 90 degree

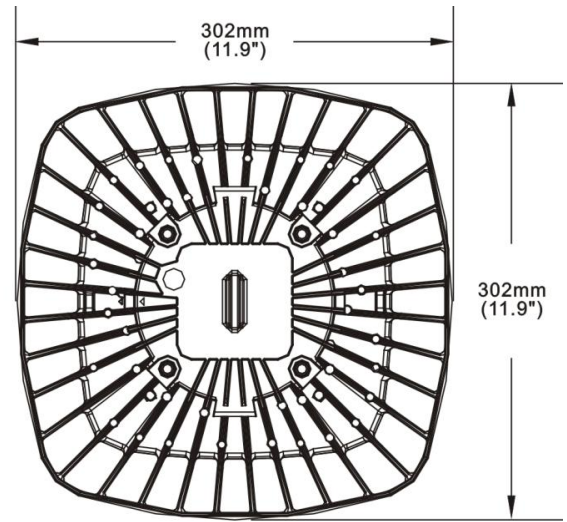
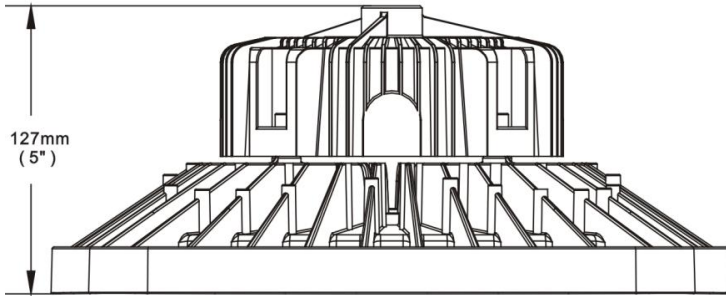


G: 120 degree

Cat. No.	Number of LED (pcs)	CCT	Rated Lumen (lm)	Rated Power (W)	Efficiency (LPW)	L70 @25 °C	Driver Life @25 °C
HBS100	90	4000K/5000K/5700K	11000	100	110	>50,000h	>50,000h
HBS120	135	4000K/5000K/5700K	14400	120	120	>50,000h	>50,000h
HBS135	135	4000K/5000K/5700K	15500	135	115	>50,000h	>50,000h
HBS150	135	4000K/5000K/5700K	16500	150	110	>50,000h	>50,000h

\*The above data is rated lumen and power, the real tested data will be something different, due to the rapid and continuous advances in LED technology. LED luminaire data is subject to change without notice.

Net Weight: 4.28kg (9.44lb)



The unit is packed in carton box of the dimension 368x368x216mm and gross weight is 5.1kg.

**Mounting & Accessories**

Mounting options	Accessories	Image
Hook w/chain mounting (standard)		
Rod mounting (optional), ordered as accessory. (rod is not included)		
Yoke mounting, ordered as accessory.		

\*pls contact the sales representative for ordering the accessories depends on your mounting demands. BBE LED reserves the right to change specifications and dimensions without notice. Lamp and electrical specifications / availability subject to change by manufacturer without notice. Please refer to detailed specification sheets for additional information and spec details.

